

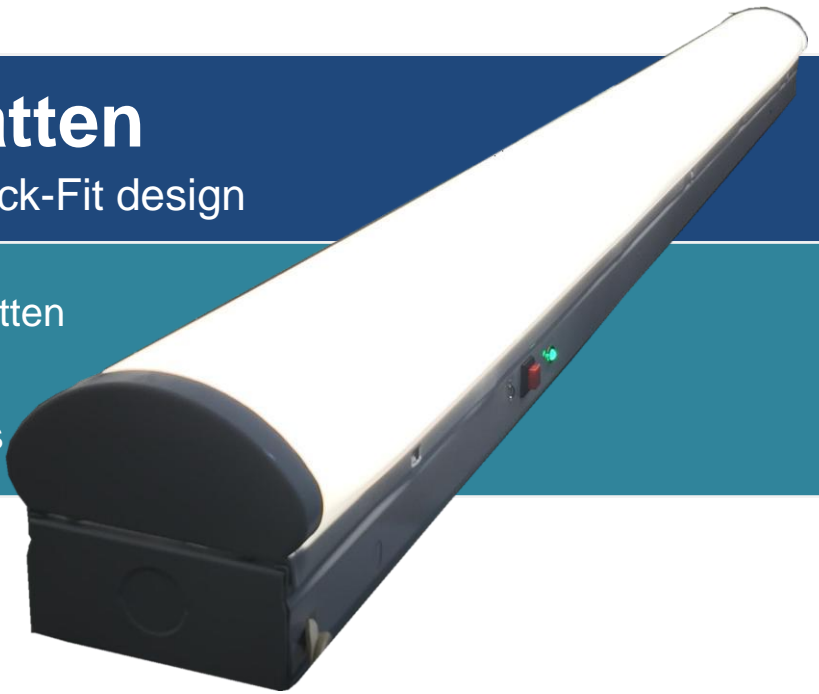
Quick-Fit LED Batten

Linear LED batten - 40W - Quick-Fit design

Replaces 2 x 36W fluorescent batten

Exclusive Quick-Fit design

Bright white light - 50,000 lumens



Quality diffused linear LED batten

Linear-style - no tubes

Extra-bright 4000Lumens-4400Lumens output
50,000+ hours service life with 3 year warranty.

Exceptional value for money

Low purchase cost for quality LED batten

Energy efficient - saves up to 60% compared to fluorescent.

Exclusive Quick-Fit design for faster 3 step installation

Unique two part batten with quick release connectors

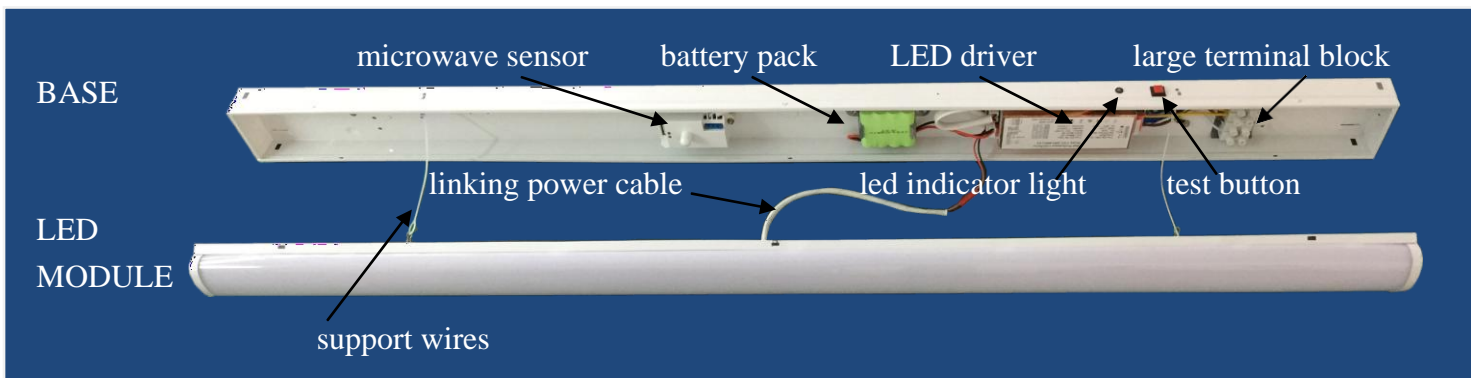
Fast installation and easy access for any future maintenance.

Applications

Multi purpose, energy-efficient diffused batten for internal use. Surface mounted or suspended.

Where speed of installation is important.

For warehouses & factories, offices, schools, libraries, car parks, restrooms, corridors, basements, food preparation areas.

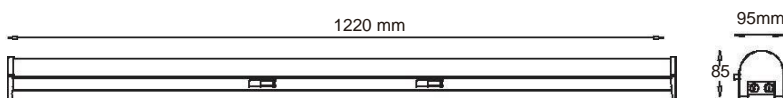


Easy to daisy-chain battens end-to-end

Double terminal block for running cable to next batten

Easy access through batten end-caps.

Sleek, low profile design



Technical parameters

Format	Di used linear LED Batten
Power consumption	40W
Fluorescent T8 equivalent	2 x 36W plus ballasts
Lumen output	4000-4400 lm
Colour temperature	3000K, 4000K, 5000K
Colour rendering index(CRI)	85
Input voltage	176-264V AC, 50/60Hz
Power Factor / THD	≥0.90 / ≤15%
Service life	50,000+hours
Operating temperature	-10 to 40°C
Construction - Di user	Frosted polycarbonate di user
Construction - Tray	Powder coated steel
IP rating	IP40
Dimensions mm	1220 L x 95 W x 85 H
Weight	3.5kg
Emergency & sensor:	Yes

Quick-Fit LED Batten

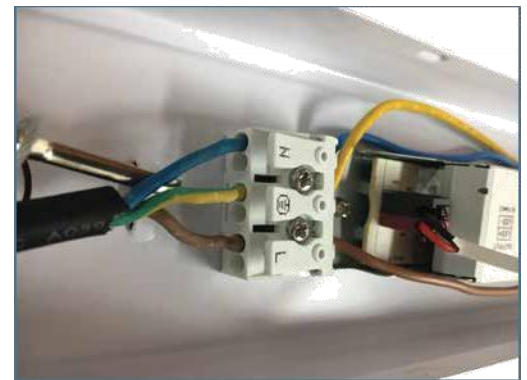
Quick-Fit installation instructions



SIMPLE 3 STEP INSTALLATION

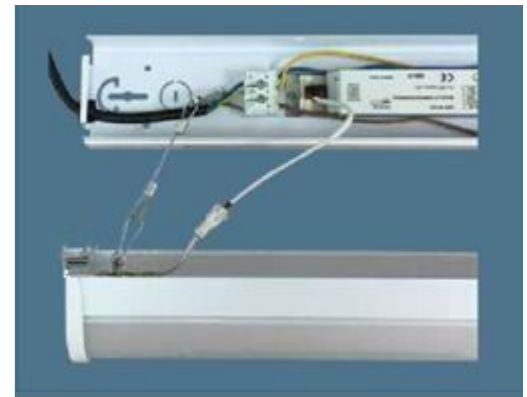
1. Connect the base

- Fix base section of the batten to the ceiling
- Connect the AC power cable to the terminal block, either through the top or via the end cap.



2. Join the two halves

- Connect the LED module to the base section with the two wire ropes to support the weight
- Join the ends of the internal power cable together
- Test the light.



3. Lock the two halves together

- Push led module to lock the clips on the base into holes to secure the batten

