

HiPole X



The Right Solution for Area Lighting



HiPole X

HiPole X is the best choice for Sport Lighting and car park Lighting. High efficiency and high power enables it to replace 1000W 1500W HID/HPS/MW. High power and multiple installations and optics allow HiPole X for different applications.

Applications

HiPole X is specially designed for outdoor applications like auto dealership, stadium and square.

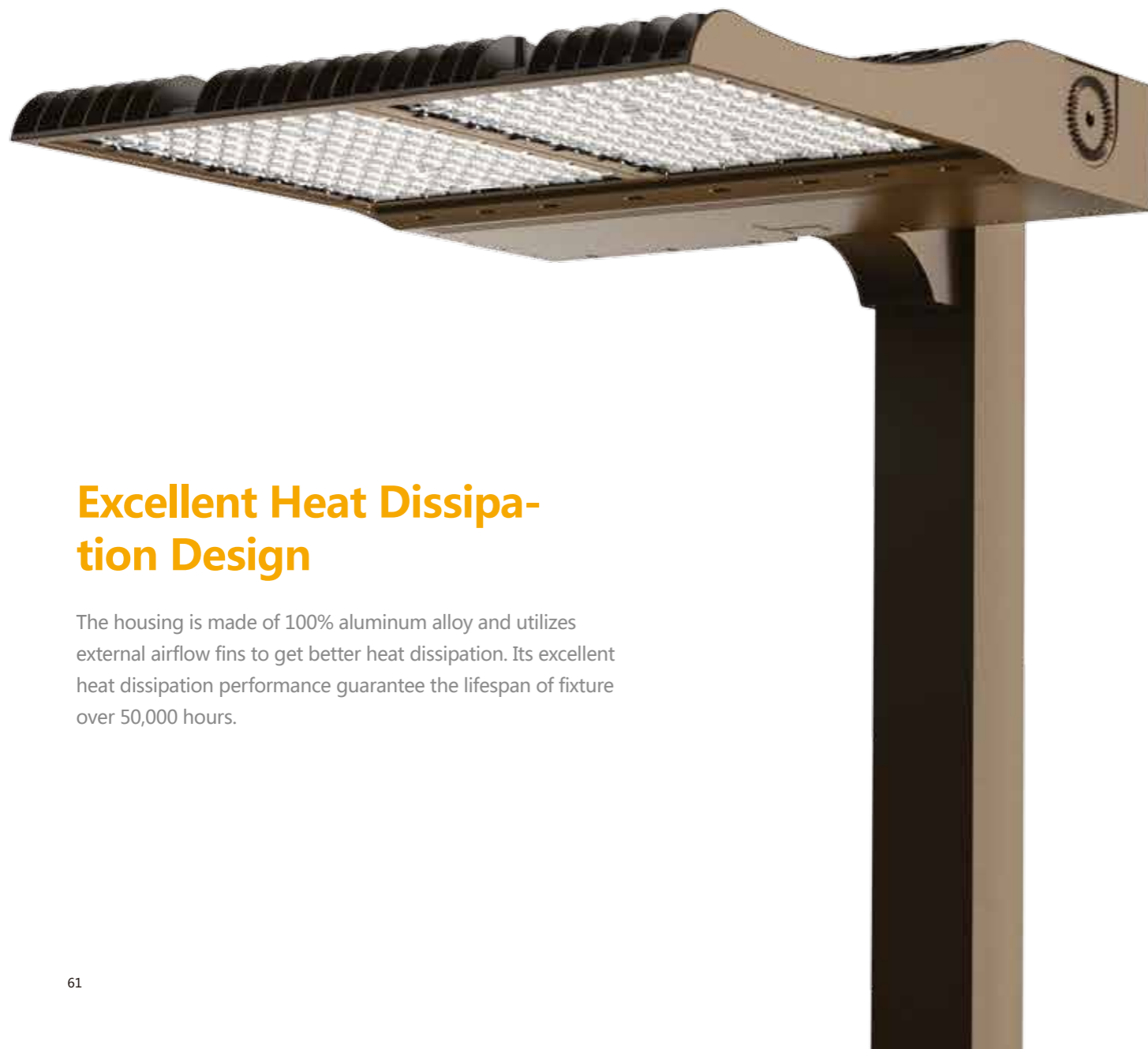


10KV Surge Protection & IP66 & IK10

HiPole X has built-in Littelfuse SPD. 10KV common surge (line-to-ground) and differential surge (line-to-line) mode protection is standard. The fixture reaches IP66 and IK10 rating.

Good Corrosion Resistance

Electrophoresis and powder coating with strong anti-corrosion performance.



Excellent Heat Dissipation Design

The housing is made of 100% aluminum alloy and utilizes external airflow fins to get better heat dissipation. Its excellent heat dissipation performance guarantee the lifespan of fixture over 50,000 hours.



High Lumen Efficiency 145lm/w

When using Soul LEDs and Meanwell driver, lumens can be up to 145lm/w, and power factor is >0.92.

Up To 600W

Five powers are optional, small heat sink for 180W, 240W and 300W; the large heat sink for 450W and 600W.

Tennis Court Lighting Design

When lighting a tennis court, the objective is to ensure good visibility enabling both participants and spectators to follow the progress of a game. The ball, regardless of its location and speed, should always be clearly visible. Creating good visibility requires sufficient contrast to be created between objects and their background, good illumination levels and even distribution of light across the playing surface.

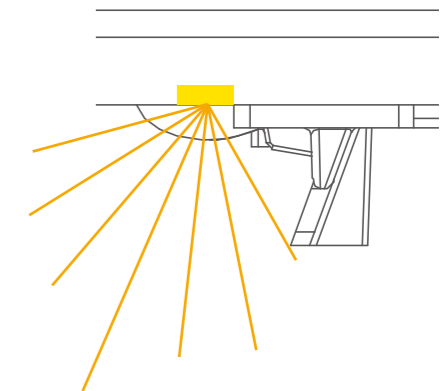


- SLST11 is Born for Tennis Court Lighting ST11-450w & 600w Replace 1000W 1500w HID Directly
- Tailored Asymmetrical Beam angle
- Uplight control
- Glare control

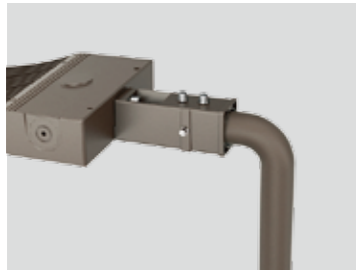


Backlight Control

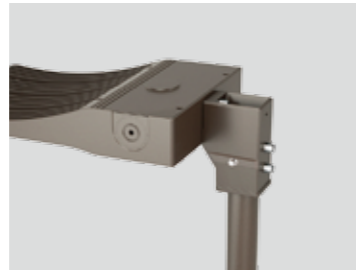
Housing-side shields are available to control unwanted stray light to avoid light pollution.



Multiple Mounting



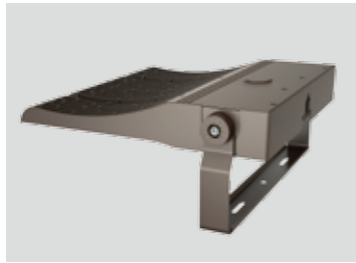
Pole Mount-side entry



Pole Mount-post top



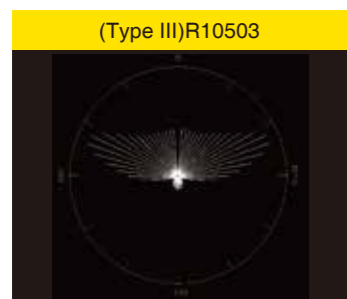
Straight-Arm



U-Bracket

Precise Optical Lens

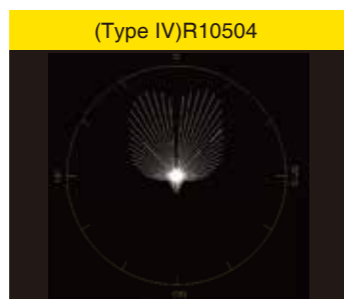
Type II /III/IV(Asymmetrical light distribution), no back light.
Type V(Symmetrical light distribution) for large open area.



(Type III)R10503



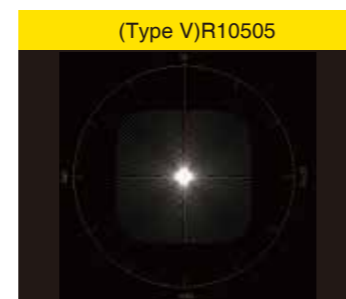
Good Backlight Control



(Type IV)R10504



Good Backlight Control



(Type V)R10505

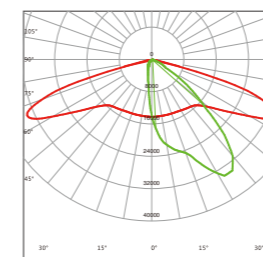


Large Open Area

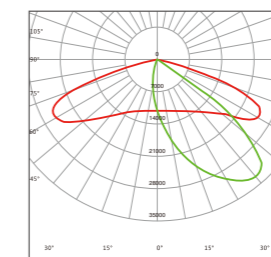
Technical Data

Part Number	SLST11-180	SLST11-240	SLST11-300	SLST11-450	SLST11-600
Lumen Output	26,100lm	34,800lm	43,500lm	65,250lm	87,000lm
Wattage	180W	240W	300W	450W	600W
Luminous Efficacy	145m/W				
CCT	4000K(3000K, 5000K optional)				
CRI	>Ra70(>Ra80 optional)				
IP Rating	IP66				
Working Temperature	-30°C to +50°C				
Input Voltage Power	100-240Vac/100-277Vac/277-480Vac, 50-60Hz				
Factor	≥0.92				
Lifespan	>50,000hrs				
HID Equivalent	400W	600W	750W	1000W	1500W

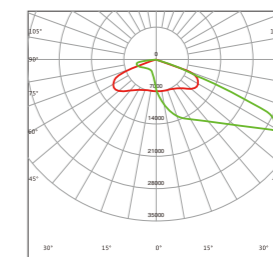
Light Distribution



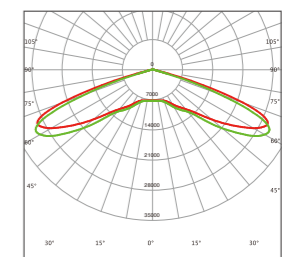
R10502



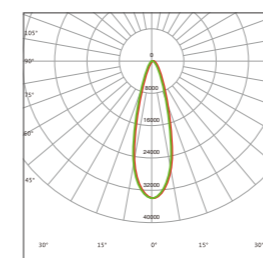
R10503



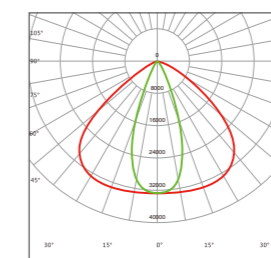
R10504



R10505



R10533



R10564

Controls and Dimming

- ▶ Photocell
- ▶ 5-Step Timer Dimming
- ▶ 1-10V Dimming