

NEW Generation **LED Panel Light**

- Italian Design ,Fireproof Housing
- Attractive Appearance,2.0KGS
- High Luminance Efficiency Up To 100LM/W
- +0-10V Dimmable/ Emergency Version



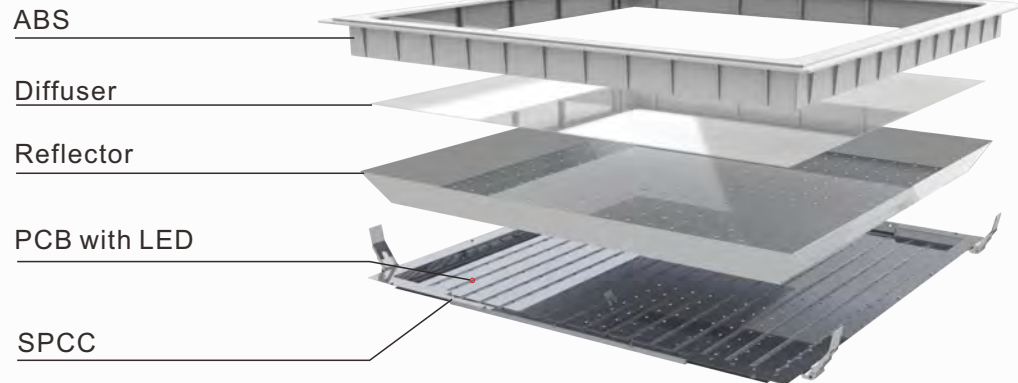
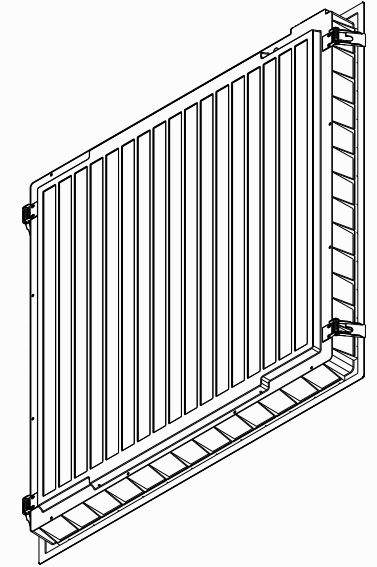
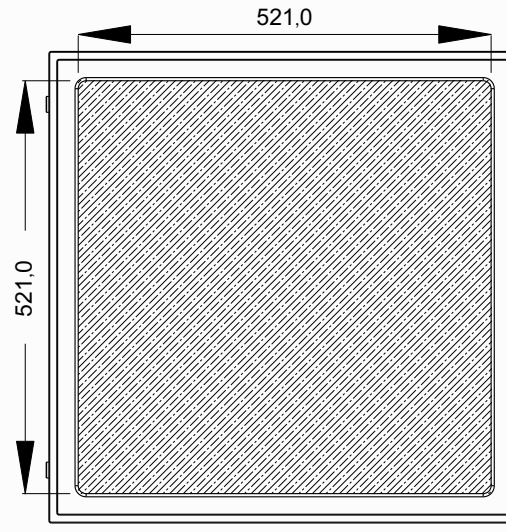
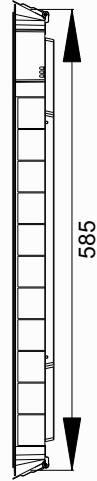
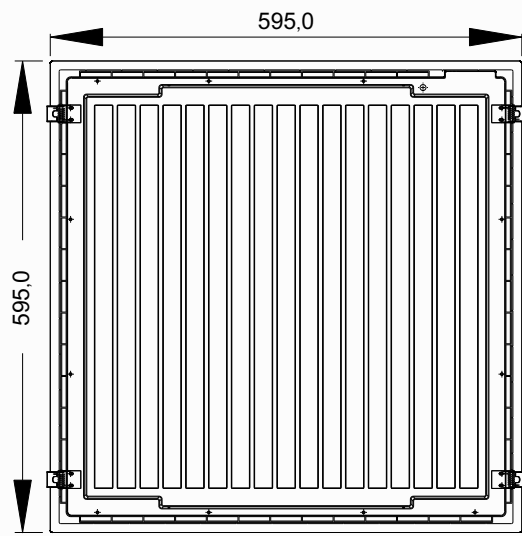
Our Elegant and Elaborate designed Backlit LED panel light is mainly intended to save energy and landscape. High brightness, soft light and no guide plate is the main characteristic of this series of backlit panel. The high Lighting Efficiency can be up to 100lm/w. Easy to install and maintain to replace the conventional lights, like fluorescent lamp, energy saving lamp, Down light, etc. Especially applicable for Office buildings, Supermarkets, Shopping malls, Conference halls, Hotels, etc. The warranty is five years. Our products are all strictly SAA/ GS/CB/CE/RoHS approved.

Features and Advantages

1. Elegant appearance: no screws on the surface, smooth and tidy
2. High Lighting Transmittance Efficiency: up to 93% by imported diffuser from Japan
3. High Lighting Efficiency: over 100lm/W by SMD 3014 LED
4. No start-up time, no flickering, no noise
5. No mercury or lead enters the environment. No RF and electronic magnetic interference
6. Outstanding Heat Dissipation: help to reduce light decay and extend life span
7. Over 50,000 hours life span.



Dimension



Application

- Office
- Kitchen
- Library
- Department Store & Boutique
- Restaurant & Cafeteria
- Conference Room
- Hospital & Laboratory
- Shopping mall
- Supermarket

Technical Specification

A: Technical Parameter

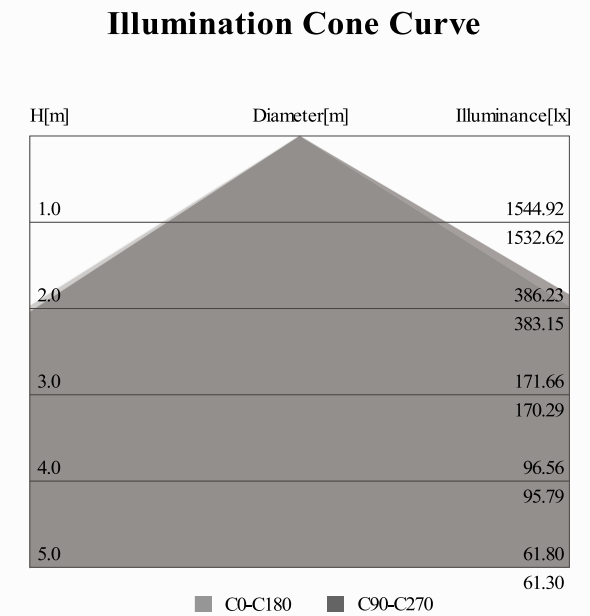
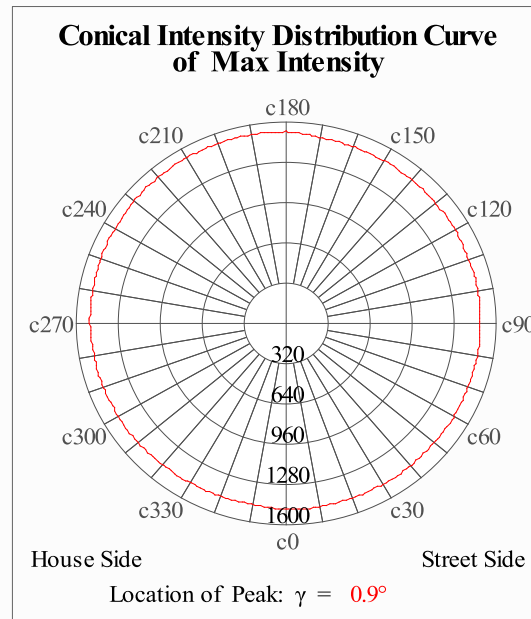
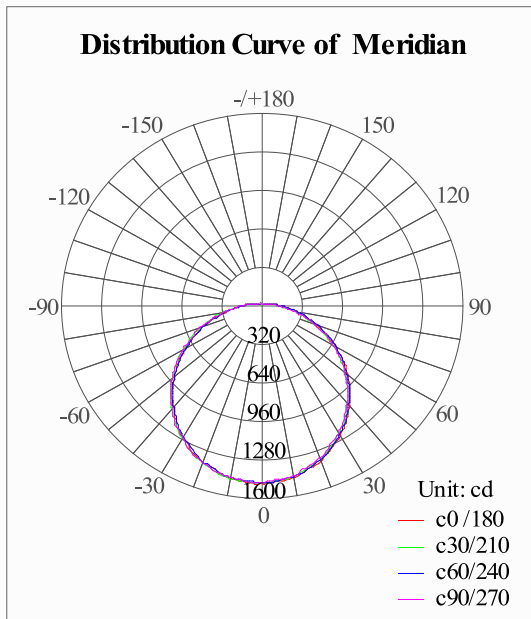
Item No.	SPL-0606-3604	
Dimension	595x595x52mm	
Voltage	AC100V-240V 50/60HZ	
Power	36W	
LED Type	SMD3014/SMD2835	
LED Quantity	324pcs	
Luminous Flux	Warm white	>3400lm
	Neutral white	>3500lm
	Cool white	>3600lm
Color Temperature (CCT)	Warm white	2800-3500K
	Neutral white	3800-4500K
	Cool white	5500-6500K
Beam Angle	120°	
Color Rendering Index (CRI)	Ra80	
Power Supply Efficiency	>90%	
LED Luminous Efficiency	Up to 100lm/W	
Power Factor (PF)	>0.95	
Total Harmonic Distortion (THD)	≤15%	
IP Rank	IP 42	
Net Weight	1.8kgs	
Certificate	SAA, TUV, CE, GS, CB, ERP	

B: Mechanical Specifications

LED Driver	Isolated Constant Current LED Driver
Connection to Power	2X0.5mm ² UL Cable
Housing Processing	Whole injection housing
Material	PS, ABS, SPCC
Diffuser	Frosty Diffuser
Installation Component Set	1. Recessed Installation, YES
	2. Suspended Installation, Optional

C: Environmental

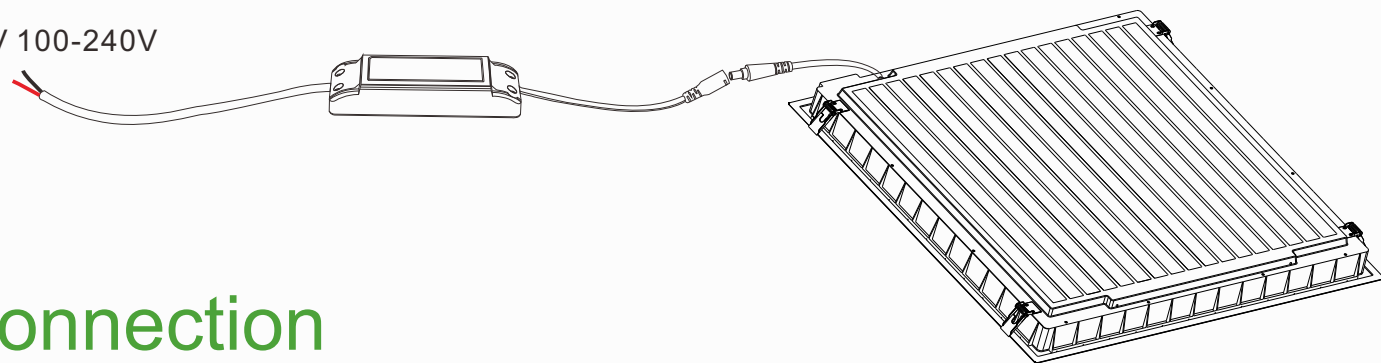
Temperature Range Operating	-25°C ~ 50°C
Humidity Range Operating	20% ~ 95%
Temperature Range Storage	-40°C ~ 75°C
Humidity Range Storage	10% ~ 80%



Light Distribution Curve & Max CD Distribution Curve

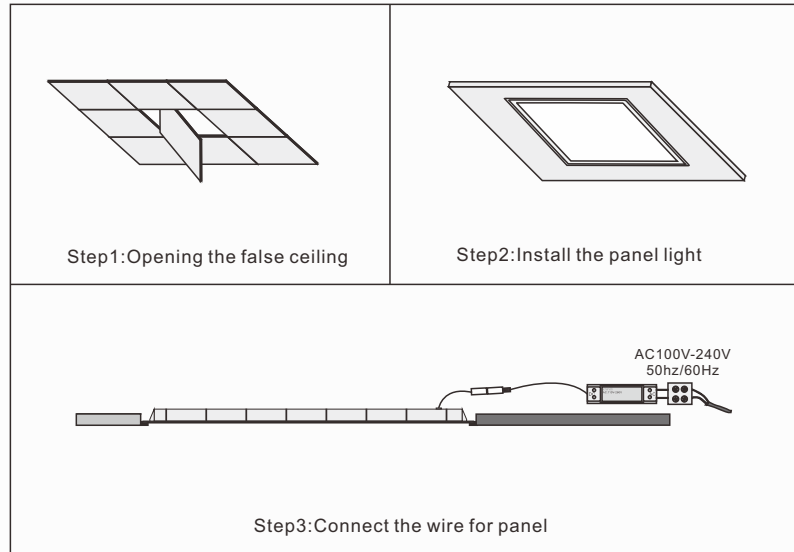
Illumination Diameter

INPUT: AV 100-240V

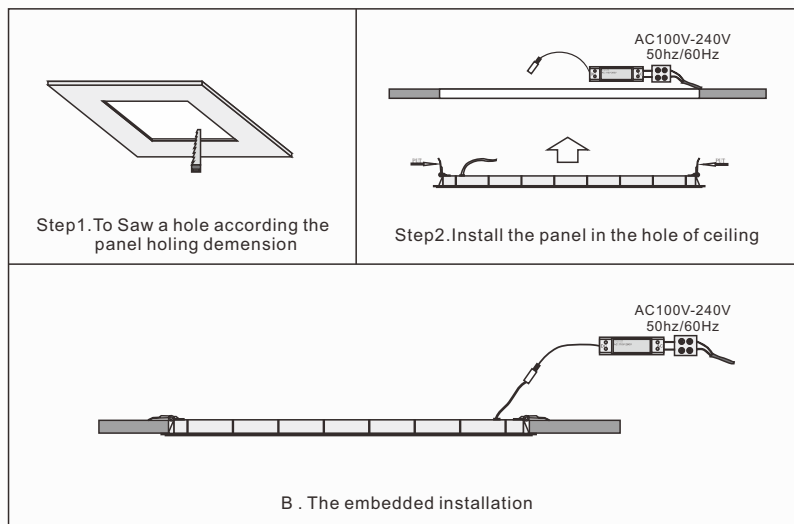


Electrical Connection

A. Standard False Ceiling Installation



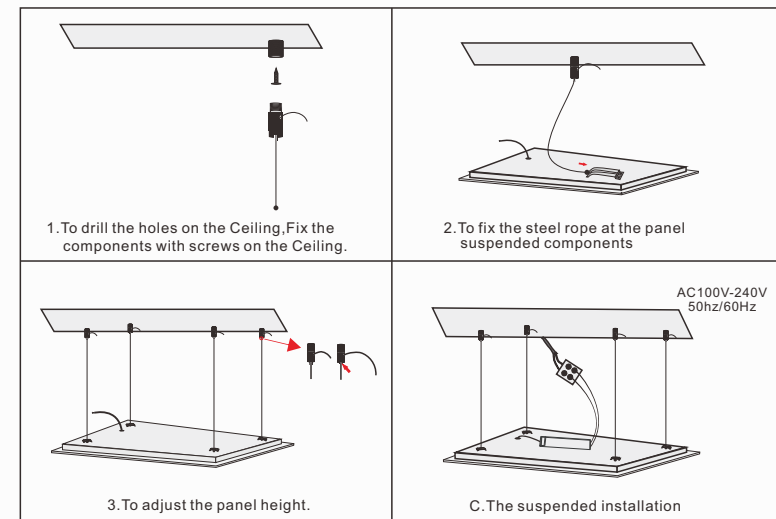
B. Embedded installation



Installation

Warning:
Before installation,
please make sure the power is off.

C. Suspended installation



Compliance and Standards

1. Insulation Resistance

The IR shall be at least $50M\Omega$ when apply 500Vdc between primary and secondary

2. Dielectric Strength (Hi-pot)

Input to Output 3750Vac 60Hz 1minute $\leq 3MA$. When AC voltage of 3.75KV is applied, and the voltage applied to the insulation under test is gradually raised from zero to the prescribed voltage in 1s, and held at that value for 60s between the inputs. And output and between the input and housing, the current sensitivity shall be less than 5mA. After this test, the adapter shall exhibit no electrical and mechanical abnormalities.

3. Leakage Current

The leakage current shall be less than 0.25m A for class II when power supply is operated maximum Input voltage and maximum load.

4. Safety Standard

IEC:60598-1: 2008 IEC61347-1/A1: 2010 IEC61347-2-13:2006 IEC62031: 2008
IEC62471: 2006 IEC62471-2: 2009: Passed
EN60598-1/A11: 2009 EN61347-2-13: 2006 EN61347-1/A1:2011 En62031: 2008
En62471: 2008 EN61195:1999 EN62493:2010: Passed

5. EMI/ EMS Standard

En55015: Passed
EN61000-3-2: Passed
EN61000-4-2: Passed

6. Certificates

TUV/ GS/ CE/ RoHS/ CB/ ERP

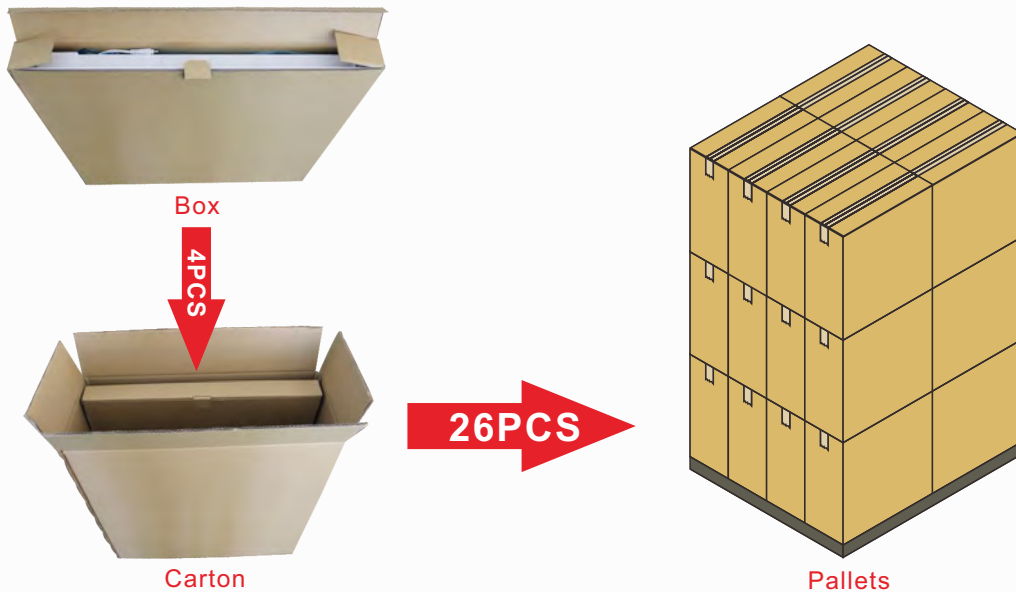


Packing

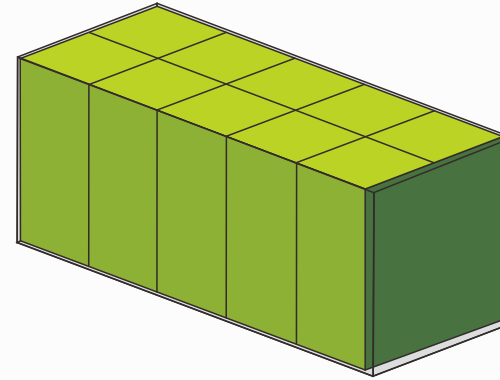
A: Packing Information

	Type	Carton Size	Quantity	G. W.
1. LED Panel	inner box	610x610x60mm	1pcs	2.1Kgs
	master carton	630x630x270mm	4pcs	9.6Kgs
2. LED Driver	inner box	155x58x30mm	1pcs	0.2Kgs
	master carton	310x320x80mm	20pcs	4.0Kgs

B: Packing Pictures

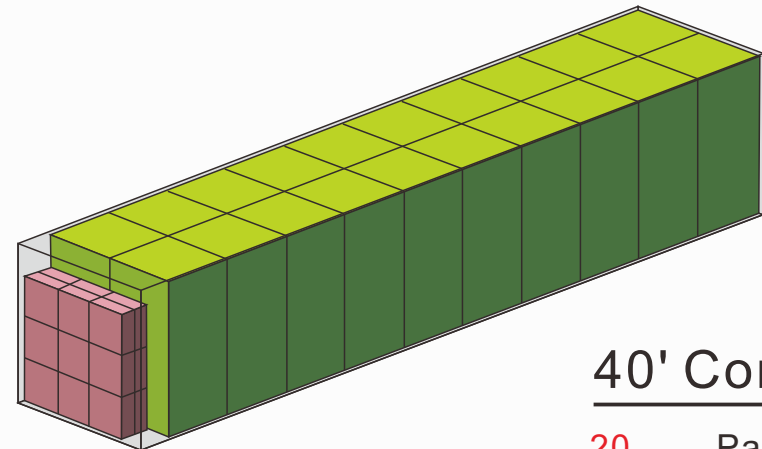


C: Container Loading



20' Container

10 Pallets
260 Cartons
1040 Boxes



40' Container

20 Pallets
278 Cartons
2152 Boxes